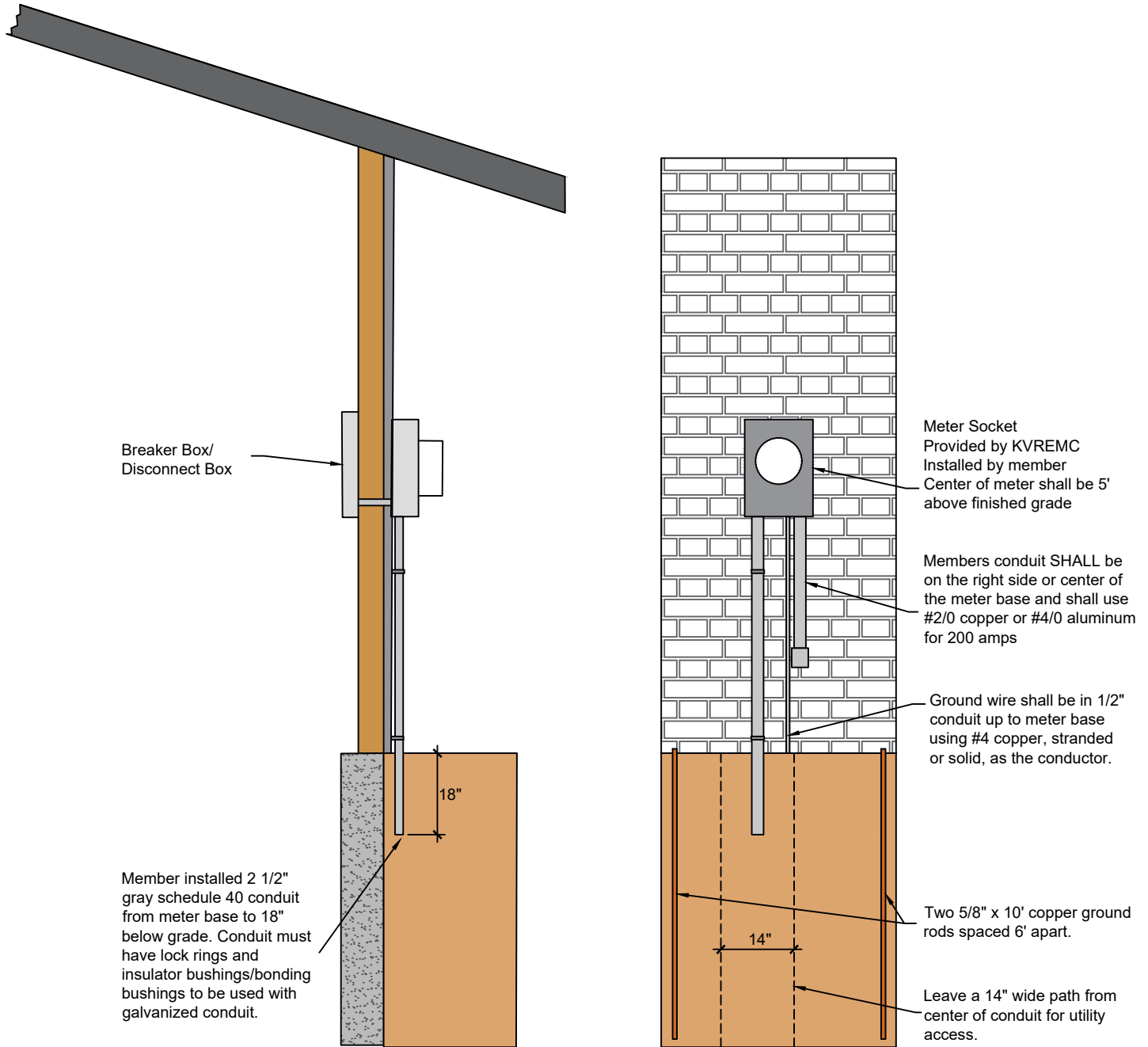


200A UNDERGROUND SERVICE ON BUILDING

GENERAL INFORMATION

KV REMC ENGINEER MUST APPROVE METER LOCATION PRIOR TO INSTALLATION.



GENERAL INFORMATION FOR UNDERGROUND SERVICES

- Minimum size underground service is 200 Amp
- Member must supply 3" gray schedule 40 conduit if service will be crossing a driveway.
- A means of disconnect must be within 10' of meter base.
- Member wires connect to bottom lugs, KVREMC wires connect to top lugs.
- Only KV REMC service wires & member load wires are allowed in the meter socket.

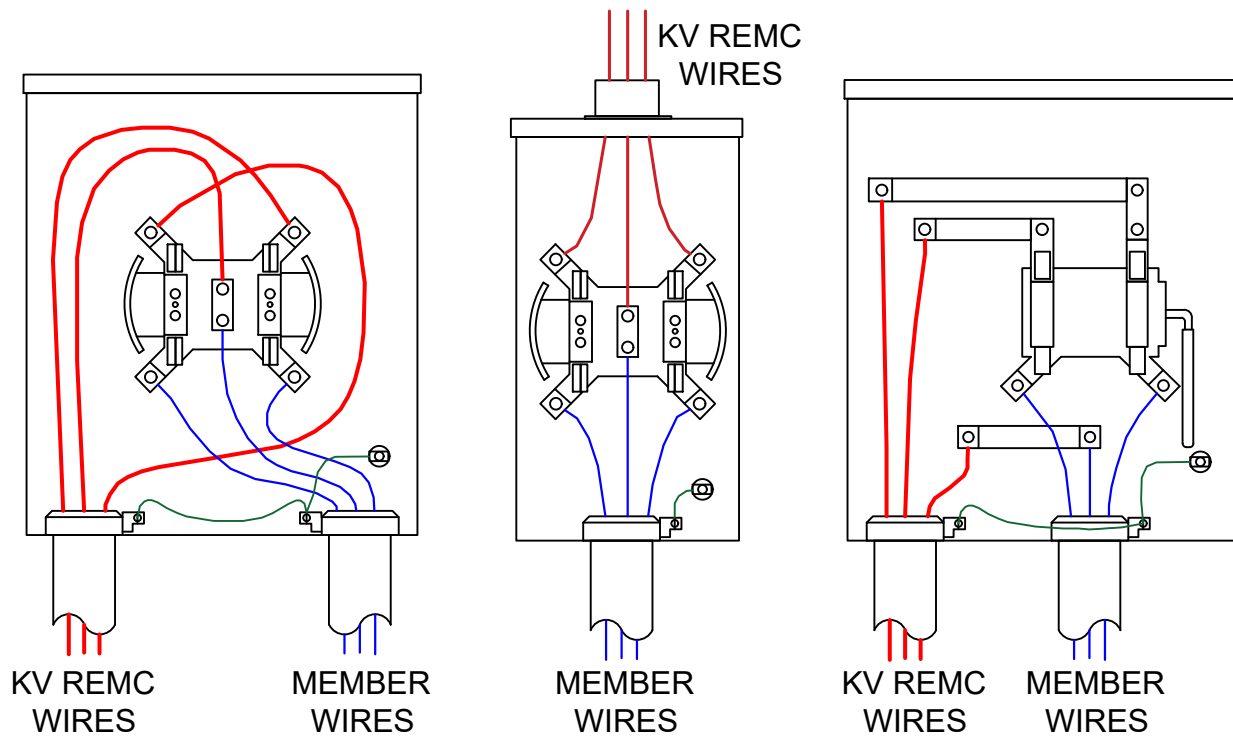


100 OR 200 AMP RESIDENTIAL SERVICES

1. The location of the meter base must be approved by Kankakee Valley REMC (KV REMC). And electrician is to install the meter base on the house or H-Frame, mounted at 5' to the center of the meter base. Meter bases can be obtained at our office for a fee. If purchasing a meter base from another provider the meter base must be UL listed, have a ringless cover, a means for bypass (horns or lever) and be the proper size for the service. An exception is that a 320 Amp meter base can be used for a 400 Amp service.
2. No member owned facilities are allowed on KV REMC poles. If found, facilities will be removed without notice.
3. Meter Base:
 - a. Meter base must be mounted approximately 5' to the center of the meter, from the final grade.
 - b. All four corners of the meter base must be secured.
 - c. There must be adequate working space in front of the meter base. Air conditioners, furnace exhaust systems, and gas meters must be a minimum of 3 feet away from the meter base.
 - d. Repairs to the meter base and socket are the responsibility of the member. See attached Exhibit A for delineation between KV REMC facilities and member facilities. If the repairs cannot return the meter base to its original condition, the member will be notified in writing to replace the damaged meter base within 30 days to avoid the service being disconnected.
4. Install wire on member side only, please see appropriate diagram for details.
5. Identify neutral wires with white or gray tape.
6. Manufactured Homes:
 - a. If installed on a pad only, service must be installed within 30 feet of the home.
 - b. If installed on concrete walls and the pulling device removed, service is allowed on the home.
 - c. If service panel is not adjacent to the meter base, then a service disconnect will be required.
 - d. Manufactured homes with a meter stub are required to have a 4-wire cable from the meter stub disconnect to the home with a separate ground conductor with the bonding taking place only at the meter stub equipment disconnect.

SERVICE ENTRANCE GUIDE

SERVICE ENTRANCE SIZE	CONDUIT INTO METER BASE	1PH, 3W 120/240V	GROUNDING (COPPER ONLY, STRANDED OR SOLID)
100A	1.5" OR 2"	#4 CU	#4 CU
	2"	#2 AL	#4 CU
200A	2"	2/0 CU	#2 CU
	2.5"	4/0 AL	#2 CU
320A (2 - 200A DISCONNECTS)	3"	2/0 CU PER DISCONNECT	#2 CU
	3"	4/0 AL PER DISCONNECT	#2 CU
320A (1 - 400A DISCONNECT)	3"	350MCM CU	#2 CU
	3"	500MCM AL	#2 CU



200A 120/240V, 1PH, 3W

**OVERHEAD
100/200A 120/240V
1PH, 3W**

**320/400A 120/240V
1PH, 3W**