



LA PORTE COUNTY VOTE CENTER PLAN

June 16, 2023

LA PORTE COUNTY ELECTION BOARD

Brody Shoffner, President

James Macalka, Member

Heather Stevens, Secretary/Circuit Court Clerk

June 29 6pm
July 20 6pm
August 3 6pm

Table of Contents



Heather Stevens, Clerk

Chief Deputy
Kari Barenie

La Porte Circuit Court

(219) 326-6808, Ext. 2250

CIRCUIT COURT DIVISION
COURTHOUSE
813 LINCOLNWAY, SUITE 105
LAPORTE, IN 46350-3492
(219) 326-6808
EXT. 2270 & 2259

Brad King, Angela Nussmeyer
Indiana Election Division Co-Directors
Indiana Government Center South
Room E 204
Indianapolis, IN 46204

Indiana Election Division Co-Directors,

The Vote Center Plan for La Porte County is presented to you on behalf of the La Porte County Election Board. It is our intention to reserve the ability to continue to amend and modify this plan in order to comply with Indiana legislation and to revise it based on the needs of La Porte County and the experience with the Vote Centers.

Please feel free to contact me if you have any questions or concerns regarding this Vote Center Plan.

Thank you,

Heather Stevens
La Porte County Circuit Court Clerk



Heather Stevens, Clerk

Chief Deputy
Kari Barenie

La Porte Circuit Court

(219) 326-6808, Ext. 2250

CIRCUIT COURT DIVISION
COURTHOUSE
813 LINCOLNWAY, SUITE 105
LAPORTE, IN 46350-3492
(219) 326-6808
EXT. 2270 & 2259

MESSAGE FROM LA PORTE COUNTY CLERK HEATHER STEVENS

June 16, 2023

Citizens of La Porte County,

Vote Centers have been a reality in Indiana elections for well over a decade. However, it was not until last year that La Porte County was able to secure the equipment needed to make that transition. Pros and cons have been weighed out by Election Officials, Party Leaders, Poll Workers, and most importantly voters. We believe that this is the right time with the right leadership for La Porte County to make the change to Vote Centers.

The move to Vote Centers will provide La Porte County voters with the same consistency that they have come to enjoy during the Early Voting period of elections. Voters will be able to visit any of the Polling Locations on Election Day, giving voters much more access and convenience than traditional precinct-based voting allows.

Many have spent their time and energy to assist in making this change as successful as possible. I am proud of the work that everyone has put in. I am especially proud of the nonpartisan manner in which everyone involved displayed. It has been refreshing to see so many people from different parties aiming to achieve the same goal of making voting easier and more convenient for the voters of La Porte County.

Sincerely,

Heather Stevens
La Porte County Circuit Court Clerk
Secretary of the La Porte County Election Board

LA PORTE COUNTY VOTE CENTER PLAN

June 16, 2023

La Porte County Election Board Resolution 2023-3

In compliance with IC 3-11-18-1-4, the La Porte County Election Board proposes to adopt a plan for the establishment of Vote Centers in La Porte. This Vote Center Plan is expected to provide more convenient, effective, cost effective voting access for all voters of La Porte County.

La Porte County plans to utilize 38 Vote Center locations. Indiana Code 3-11-18.1-6 requires one Vote Center per 10,000 active voters. La Porte County will provide no fewer than 38 Vote Center locations during Presidential and Midterm Elections. This is one Vote Center per roughly 1,912 registered voters.

As of May 12, 2023:

- (A) Total number of registered voter within La Porte County – 79,651
- (B) Total number of active voters within La Porte County – 72,673
- (C) Total number of inactive voters within La Porte County – 6,978

1. The following are suggested vote center locations to be open on Election Days for Presidential and Mid-Term Elections:

(The following locations will be reviewed prior to each election cycle.)

- IBEW 301 E 8th St., Michigan City
- Greater Powerhouse Church of God 428 N Woodland Ave, Michigan City
- Arise and Shine Food & Outreach Center 1010W. Garfield St., Michigan City
- Grace Learning Center 1007 W Garfield St., Michigan City
- Apostolic Lighthouse Church 1320 Earl Rd., Michigan City
- Southwind Immanuel Church 1301 Southwind Dr., Michigan City
- Faith City Assembly 1314 S Woodland Ave., Michigan City
- MC Fire Training Center 2510 Michigan Blvd., Michigan City
- Civic Auditorium 1001 Ridge St., La Porte
- Cummings Lodge Soldier Memorial Park., La Porte
- Presbyterian Church 307 Kingsbury Ave., La Porte
- Moose Lodge 925 Boyd Blvd., La Porte
- Agape Church 1601 I St., La Porte
- State St Church 209 State St., La Porte
- Salem United Church 302 S. Main St., Wanatah
- Center Twp Vol Fire Dept 4504 W Johnson Rd., La Porte
- Coolspring Vol Fire Dept 7111 W 400 N., Michigan City
- Red Mill County Park 0185 S Holmesville Rd., La Porte
- American Legion Post #37 756 E US Hwy 20, Michigan City

The Center of LaCrosse 100 S Washington St., LaCrosse
 Michiana Shores Vol Fire Dept 911 El Portal Dr., Michiana Shores
 Heston Hills Conf Center 1933 E 800 N., La Porte
 Hanna Methodist Church 101 W Hopper St., Hanna
 Monroe's Crossing 7038 N Chicago Trl., Hudson Lake
 Johnson Twp Comm Center 900 E 900 S., Walkerton
 Kankakee Twp Vol Fire Dept 3 N Michigan Ave., Rolling Prairie
 Kingsbury Vol Fire Dept 111 S Main St., Kingsbury
 Kingsford-Union Fire Dept 317 Drummond Rd., Kingsford Heights
 Lincoln Twp Comm Center 3308 S. 800 E., Walkerton
 Long Beach Comm Center 2501 Oriole Trl., Long Beach
 Union Mills Conservation Club 100 Mill Pond Rd., Union Mills
 Pleasant Twp Vol Fire 9 Main St., Stillwell
 Fish and Game Blub 3901 E Michigan Blvd., Michigan City
 Prairie Twp Comm Bldg 19 W 1800 S., Hanna
 Scipio Twp Fire Station 1105 W 250 S., La Porte
 Springfield Twp Vol Fire 7111 N 300 W., Michigan City
 Westville American Legion 107 N Flynn Rd., Westville
 Wills Twp Comm Center 6981 E 350 N., Rolling Prairie

2. The following are suggested Vote Center locations to be open for Municipal Elections held in the odd numbered years:

(The following locations will be used as a Vote Center location only if there will be an election held for that municipality. If an election is NOT held, then that local Vote Center will not be utilized during that year of Municipal Elections. These locations will be reviewed prior to each election cycle.)

IBEW 301 E 8th St. , Michigan City
 Greater Powerhouse Church of God 428 N Woodland Ave, Michigan City
 Arise and Shine Food & Outreach Center 1010W. Garfield St., Michigan City
 Grace Learning Center 1007 W Garfield St., Michigan City
 Apostolic Lighthouse Church 1320 Earl Rd., Michigan City
 Southwind Immanuel Church 1301 Southwind Dr., Michigan City
 Faith City Assembly 1314 S Woodland Ave., Michigan City
 MC Fire Training Center 2510 Michigan Blvd., Michigan City
 Civic Auditorium 1001 Ridge St., La Porte
 Cummings Lodge Soldier Memorial Park., La Porte
 Presbyterian Church 307 Kingsbury Ave., La Porte
 Moose Lodge 925 Boyd Blvd., La Porte
 Agape Church 1601 I St., La Porte
 State St Church 209 State St., La Porte
 Salem United Church 302 S. Main St., Wanatah
 The Center of LaCrosse 100 S Washington St., LaCrosse
 Michiana Shores Vol Fire Dept 911 El Portal Dr., Michiana Shores

Kingsbury Vol Fire Dept 111 S Main St., Kingsbury
Kingford-Union Fire Dept 317 Drummond Rd., Kingsford Heights
Long Beach Comm Center 2501 Oriole Trl., Long Beach
Westville American Legion 107 N Flynn Rd., Westville

3. The following are the suggested satellite Vote Center locations to be open for Early Voting the two Saturdays prior to the election:

(The following locations to be reviewed prior to each election cycle.)

Corner of 8th and Wabash (Michigan City)
State St Church (La Porte)
Former Coolspring Library (Michigan City)
Town Hall (Wanatah)

All Vote Center locations meet the accessibility requirements under IC 3-11-8

4. For the 2023 Municipal General Election, the early voting locations are projected to be as follows:

Corner of 8th and Wabash (Michigan City)- all early voting days including the 2 Saturdays before the election

State St Church (La Porte) - all early voting days including the 2 Saturdays before the election

Mobile Voting Unit – as needed

5. Each Vote Center will have one Inspector, two (2) Judges, and 2 Clerks. One Judge will be from the opposite party as the Inspector. The number of workers, electronic poll books, and voting machines sent to each location will be determined and may be changed by the County Clerk at his/her discretion.
6. Every Ballot type for each precinct, applicable school board elections and party in primary elections shall be available, electronically, at each Vote Center.
7. La Porte County will use the MicroVote Infinity Voting Panels, Model EMS 4.4. Just as in traditional elections, at the end of Election Day, votes will still be tallied and reported by precinct. The voting machines are never be connected to the internet.
8. An Electronic Poll Book will be used for voters to be able to go to any Vote Center location of their choosing to cast their ballot. La Porte County utilizes KNOWiNK innovative election solutions. This electronic poll book will be securely connected to every vote center and to the La Porte County Election Board at the La Porte County Clerk's Office on Election Day. It will securely connect every satellite vote center and meets all standards set out by Indiana law under IC 3-11-8-10.3. In addition, KNOWiNK election managers have intimate knowledge and experience with electronic poll books. A minimum of one (1) electronic poll book will be available at each Vote Center.

NOTE: Voters from every precinct may vote at any Vote Center location or satellite Vote Center location. Every ballot style for each precinct in La Porte County will be available at each Vote Center and each satellite vote center (depending on the election, the number of ballot styles varies greatly; therefore, this plan does not attempt to provide a specific number of ballot styles). Each Vote Center and Early Vote Center will be connected to all others (as well as the La Porte County Election Board) via electronic poll books connected via secured internet lines. At least 1 electronic poll book terminal will be available at each location.

9. **Electronic Poll Book Description and Security Details:** The hardware, software, and firmware used for the poll pad, will be utilizing theKNOWink Poll Pad. The Poll Pad e-poll book application software runs on the Apple iPad tablet. This system is certified by the Indiana Secretary of State's Office. The Poll Pad system interfaces with MicroVote Election Management System as part of the certified system. The number of voters on the machines and the number of voters in the poll pad will be checked and balanced each day.
In the event of a power failure at each or one vote center, the voting machines and poll pad will be switched to battery backup. For obvious reasons, if the safety of voters and or poll workers is ever at risk, the La Porte County Security Plan will go into effect with instructions from the La Porte County Clerk, La Porte County Election Board, La Porte County EMA, and the La Porte County Sheriff.
10. La Porte County has a full media and community outreach strategy that will involve press releases to newspapers and radio stations. In addition, we will use our county website: www.laporteco.in.gov to prepare La Porte County citizens for any change.

This resolution shall take effect immediately and may only be rescinded by unanimous vote of the entire membership of the La Porte County Election Board.

SO APPROVED THE 16th DAY OF June, 2023

LA PORTE COUNTY ELECTION BOARD

Brody Shoffner, President

James Macalka, Member

Heather Stevens, La Porte County Clerk

What is Precinct Based Voting?

Precinct Based voting requires that voters within a county vote at the polling location within the precinct in which they are registered to vote.

What is a Vote Center?

A Vote Center is a polling location that any registered voter in the county may vote at rather than being required to vote at a location within their precinct.

Process Overview

The La Porte County Election Board developed this plan after much discussion, input at public meetings, committee meetings, thought, and research. It is the intention of this Board to increase voter turnout, add flexibility and convenience, and to create consistency while keeping a nonpartisan mindset. By moving La Porte County to a Vote Center County we will be able to better utilize our equipment while making voting easier for all while reducing the cost to the tax payers.

Demographics

With a population of more than 112,000 citizens, La Porte County is the sixteenth (16th) highest county in Indiana. At the same time, La Porte County is the second (2nd) largest county in Indiana with more than 598 square miles. The 79,651 registered voters are divided among 21 townships and 92 precincts with a traditional 48 polling locations.

Voting Opportunities

All registered voters of La Porte County will have multiple opportunities to cast their ballot. These opportunities include:

- Early In-person Voting at no fewer than 4 locations
- Absentee By-Mail (if qualified)
- Travel Board (if qualified)
- Any Vote Center on Election Day

Early In-Person Voting

Also known as Satellite Voting or Absentee in Person is described as a voter visiting one of the (no fewer than) 4 sites open the 28 days before Election Day to cast their ballot in person. La Porte County Early Voting locations include but are not limited to: La Porte, Michigan City, Coolspring, and Wanatah. Per IC 3-11-10-26.3, all Early Voting Locations are required to be open the two (2) Saturdays prior to the Election.

Absentee By-Mail

If qualified, a voter may request a paper ballot sent to them by mail. The voter would complete the ballot and mail it back to the La Porte County Election Board in the envelope provided.

Travel Board

If qualified, a voter may request to vote by Travel Board. The voter would complete the application and a bipartisan Travel Board would visit their residence to permit the voter to cast their ballot. The bipartisan Travel Board would have possession of the ballot at all times until immediately delivering it to the Election Board.

Election Day Vote Centers

Indiana Code 3-11-18.1-6 mandates that there be one (1) Vote Center for every 10,000 active voters. Based on this code, La Porte County would be required to have 8 Vote Centers. However, the La Porte County Election Board believes that in order to increase voter turnout, add flexibility and convenience, and create consistency, it is necessary to have a larger number of Vote Centers available on Election Day. Voters of La Porte County will have their choice of 38 locations to cast their ballot on Election Day. Voters may now select the most convenient location in La Porte County to them. The Board will work with the various municipalities and towns to determine how many Vote Centers are needed for Municipal Elections. Any changes to the Vote Center Plan must be made by unanimous agreement of the La Porte County Election Board.

VOTE CENTER AND SATELLITE VOTE LOCATIONS

Effective the 2024 Primary Election, La Porte County plans to utilize at least 38 Vote Center locations. Indiana Code 3-11-18.1-6 requires one Vote Center per 10, 000 active voters. La Porte County will provide one Vote Center per roughly 1,912 active voters.

Current Voter Count:

- (A) Total number of registered voters within La Porte county – 79,651
- (B) Total number of active voters within La Porte County – 72,673
- (C) Total number of inactive voters within La Porte County – 6,978

The following are suggested Vote Center locations to open on Election Day from 6am to 6pm (The following locations will be reviewed and amended prior to each election cycle).

IBEW 301 E 8th St., Michigan City
Greater Powerhouse Church of God 428 N Woodland Ave, Michigan City
Arise and Shine Food & Outreach Center 1010W. Garfield St., Michigan City
Grace Learning Center 1007 W Garfield St., Michigan City
Apostolic Lighthouse Church 1320 Earl Rd., Michigan City
Southwind Immanuel Church 1301 Southwind Dr., Michigan City
Faith City Assembly 1314 S Woodland Ave., Michigan City
MC Fire Training Center 2510 Michigan Blvd., Michigan City
Civic Auditorium 1001 Ridge St., La Porte
Cummings Lodge Soldier Memorial Park., La Porte
Presbyterian Church 307 Kingsbury Ave., La Porte
Moose Lodge 925 Boyd Blvd., La Porte
Agape Church 1601 I St., La Porte
State St Church 209 State St., La Porte
Salem United Church 302 S. Main St., Wanatah
Center Twp Vol Fire Dept 4504 W Johnson Rd., La Porte
Coolspring Vol Fire Dept 7111 W 400 N., Michigan City
Red Mill County Park 0185 S Holmesville Rd., La Porte
American Legion Post #37 756 E US Hwy 20, Michigan City
The Center of LaCrosse 100 S Washington St., LaCrosse
Michiana Shores Vol Fire Dept 911 El Portal Dr., Michiana Shores
Heston Hills Conf Center 1933 E 800 N., La Porte
Hanna Methodist Church 101 W Hopper St., Hanna
Monroe's Crossing 7038 N Chicago Trl., Hudson Lake
Johnson Twp Comm Center 900 E 900 S., Walkerton
Kankakee Twp Vol Fire Dept 3 N Michigan Ave., Rolling Prairie
Kingsbury Vol Fire Dept 111 S Main St., Kingsbury
Kingsford-Union Fire Dept 317 Drummond Rd., Kingsford Heights
Lincoln Twp Comm Center 3308 S. 800 E., Walkerton
Long Beach Comm Center 2501 Oriole Trl., Long Beach
Union Mills Conservation Club 100 Mill Pond Rd., Union Mills

Pleasant Twp Vol Fire 9 Main St., Stillwell
Fish and Game Blub 3901 E Michigan Blvd., Michigan City
Prairie Twp Comm Bldg 19 W 1800 S., Hanna
Scipio Twp Fire Station 1105 W 250 S., La Porte
Springfield Twp Vol Fire 7111 N 300 W., Michigan City
Westville American Legion 107 N Flynn Rd., Westville
Wills Twp Comm Center 6981 E 350 N., Rolling Prairie

All satellite voting (early voting) locations will be open from 8am-4pm during the week and from 8am - 3pm on the 2 two Saturdays prior to the election.

Corner of 8th and Wabash – Michigan City

State St Church – La Porte

Town Hall – Wanatah

Former Coolspring Library – Michigan City

NOTE: Voters from every precinct may vote at any Vote Center location or satellite Vote Center location. Every ballot style for each precinct in La Porte County will be available at each Vote Center and each satellite vote center (depending on the election, the number of ballot styles varies greatly; therefore, this plan does not attempt to provide a specific number of ballot styles). Each Vote Center and Early Vote Center will be connected to all others (as well as the La Porte County Election Board) via electronic poll books connected via secured internet lines. At least 1 electronic poll book terminal will be available at each location. Each location, depending on the election, will also have at least one precinct election board, meaning an inspector, two judges (of opposite parties), and two clerks (of opposite parties). (See Certification that each location above is accessible to voters with disabilities as required by the Help America Vote Act and the Americans with Disabilities Act.)

VOTING EQUIPMENT

La Porte County will continue using MicroVote Infinity machines. Because the Microvote Infinity machines are Direct Recording Electronic (DRE) machines, the requirement in Indiana Code 3-11-18.1-14 that requires ballots to be kept separately by precinct is easily met. Just as in traditional elections, at the end of the Election Day, votes will still be tallied and reported by precinct.

ELECTRONIC POLL BOOK

La Porte County will use the KNOWiNK electronic poll book from KNOWiNK Innovative Election Solutions. The electronic poll book will be securely connected to every vote center and the La Porte County Election Board at the La Porte Courthouse on Election Day. It will securely connect every satellite vote center and meets all standards set out by Indiana Law under IC 13-11-8-10.3.

ELECTRONIC POLL BOOK DESCRIPTION AND SECURITY DETAILS

For the hardware, software and firmware used for the electronic poll books, La Porte County will be utilizing the KNOWiNK Poll Pad.

The KNOWiNK pollbooks will only be accessible when a member of each party enters their undisclosed password. The number of voters on the machine and the number of voters in the KNOWiNK pollbooks will be checked and balanced daily.

In the event of a power failure at each or one Vote Center, the voting machines and electronic poll books will be switched to battery backup. For obvious reasons, if the safety of voters and or poll workers is ever at risk, the La Porte County Security Plan will go into effect with instructions from the La Porte County Clerk, La Porte County Election Board, La Porte County EMA, and the La Porte County Sheriff.

METHOD FOR PROVIDING DATA

The KNOWiNK electronic poll books will enable election administrators at election central to print out a list of voters who have voted by precinct. Reports can also be downloaded and emailed out.

SATELLITE VOTE CENTERS

Satellite Vote Centers are sites that may open during the 28-day period prior to each Election Day. Satellite Vote Centers are places where any voter in the county may vote early in person. As required under IC 3-11-18.1-4(17), La Porte County will designate at least two Satellite Vote Centers that will also be open for voting the two preceding Saturdays before Election Day.

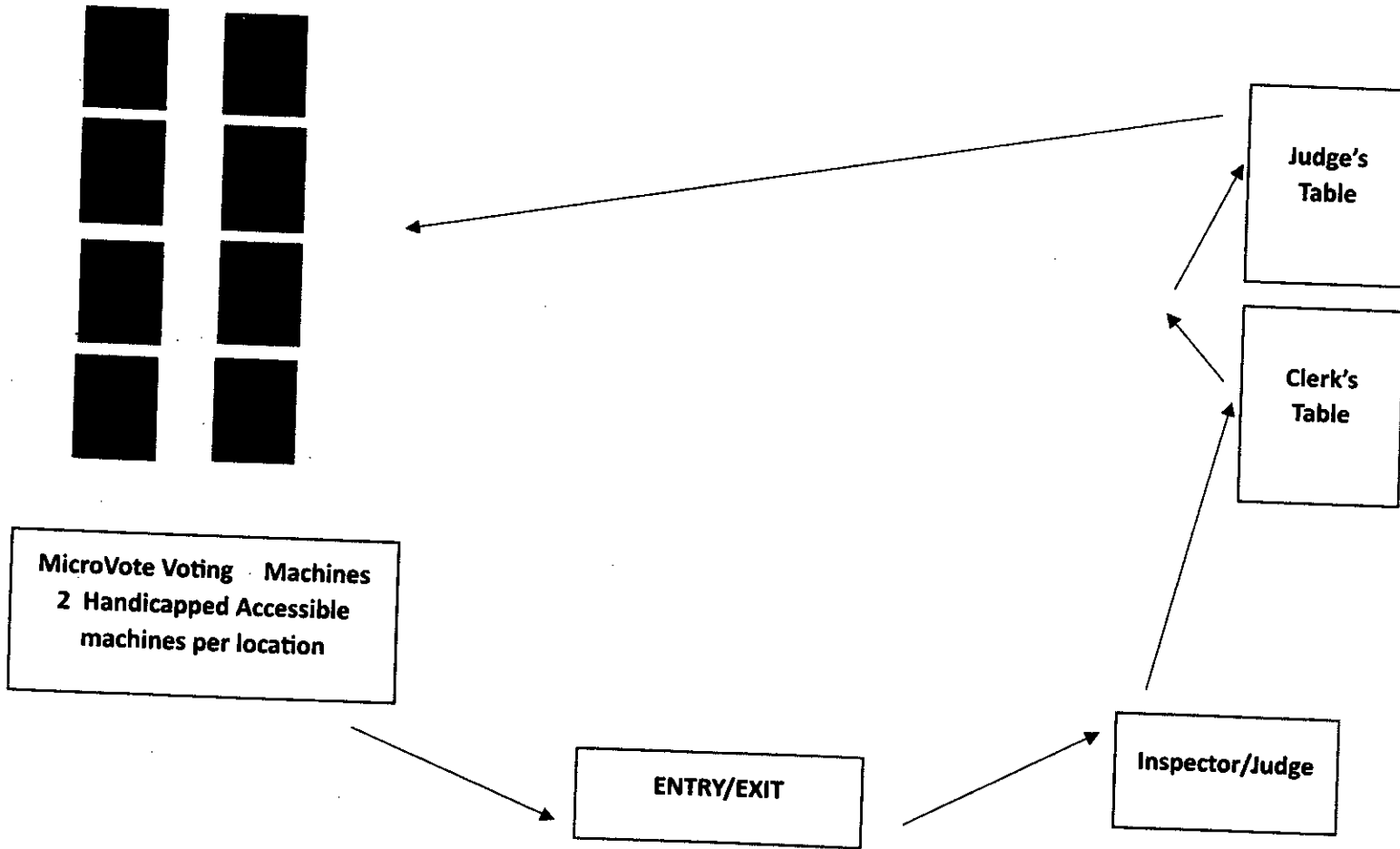
POLL WORKERS

Each Satellite Vote Center and Election Day Vote Center will have at least one traditional precinct election board made up of an Inspector, at least two Clerks (of opposite parties), and two Judges (or opposite parties) depending on the election size and location of the Vote Center. Training for all poll workers will remain required. The number of workers, electronic pollbooks, and voting machines sent to each location will be determined by the County Clerk.

RESERVE POLL WORKERS

The attempt will be made to reserve at least one reserve poll worker per Satellite or Vote Center. These workers will be paid to attend training and can work at any location needed.

VOTE CENTER SAMPLE LAYOUT



Reserve page for sample layout

VOTER EDUCATION

La Porte County has a media and community outreach strategy that will involve press releases to newspapers and radio stations. In addition, we will use our county website www.laporteco.in.gov to prepare La Porte County citizens for this change. Each voter in La Porte County will receive a postcard in the mail prior to the initial election (2023 Municipal General Election) informing them of this change and where each Vote Center is located. The Count Clerk will also attend community events where he/she will speak about the change.

EMERGENCY RESPONSE

The following describes what would happen in case of an emergency during an election. The first responders to any emergency, either man made or a natural event, are local citizens. Poll worker, volunteers, and police and fire personnel will be the first to identify the issue. The next level of response will come from the La Porte County Election Board and the La Porte County Commissioners in cooperation with the local emergency management agency. If deemed necessary by the La Porte County Election Board or the County Commissioners, the Office of the Secretary of State's Election Division will be contacted for emergency assistance. In addition, any action taken either by the Office of the Governor or the Office of the Secretary of State may be taken in consultation with the Office of the Attorney General to ensure that interpretations of the laws are correct.

Five general situations exist in which decision - making may occur regarding the election process and activities in La Porte County:

1. Situation Normal – The status quo exists, and the process moves forward according to normal laws and procedures.
2. Isolated Emergencies – Individual precincts or parts of the county experience disruption to the election process and local agencies respond accordingly.
3. Regional Emergencies – An emergency involving La Porte County and neighboring counties exists and a state – level response is required.
4. Catastrophic Emergencies inside Indiana – A large disaster exists that diverts the resources and attention of the citizens and a state – level response in cooperation with the federal government is required.
5. Catastrophic Emergencies outside Indiana – A large disaster exists in the United States that diverts the resources and attention of the citizens and a federal – level response is required

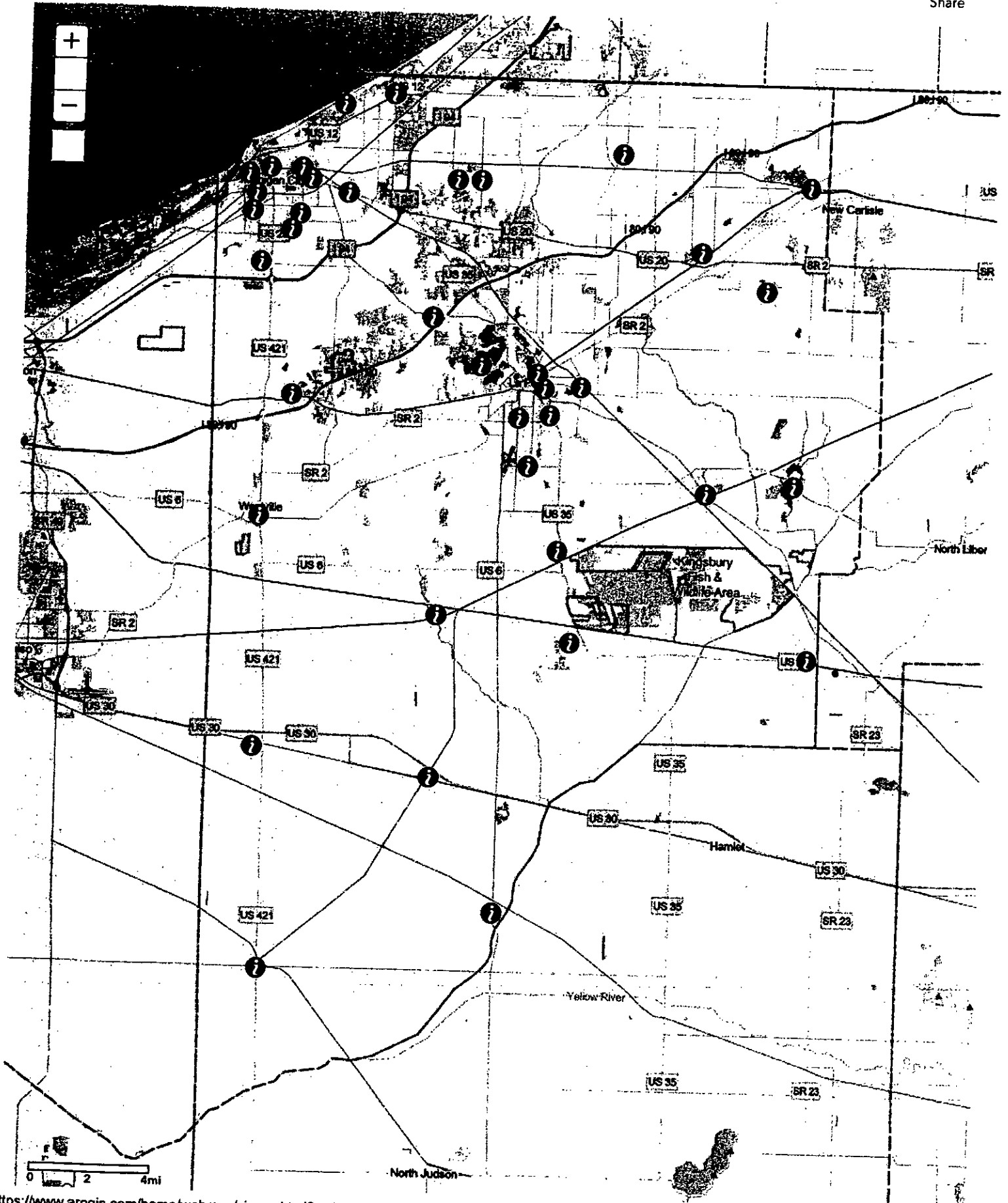
The La Porte County Commissioners work closely with the local Emergency Management Director, the La Porte County Sheriff, and local police and fire stations to ensure La Porte County is prepared for emergencies. In addition, the La Porte County Election will be in close communication with the County Commissioners should any emergency occur on or surrounding the election process. In order to be prepared for an emergency that could occur on or surrounding an Election Day, La Porte County will take the following steps prior to each Election Day:

1. Review IC 3-11-8-3.2 which outlines procedures for changing polling locations.
2. Review of State's Quantity Purchasing Agreements (QPA) whereby La Porte County may buy or lease emergency generators or other supplies.
3. Contact power companies to ensure all Vote Centers have power on Election Day.
4. Voting machine vendor will have support staff in the field or by phone in the event of a disruption.
5. In the event of a power failure at a Vote Center, the voting machines and electronic pollbooks will be switched automatically to battery backup.
6. In the event that the internet is inaccessible at a Vote Center location, the eligibility of a voter will be ascertained from records maintained by the La Porte County Voter Registration Office via telephone (cell phone).

ArcGIS ▾ LaPorte County Vote Centers (Proposed 2023)

Details | Basemap

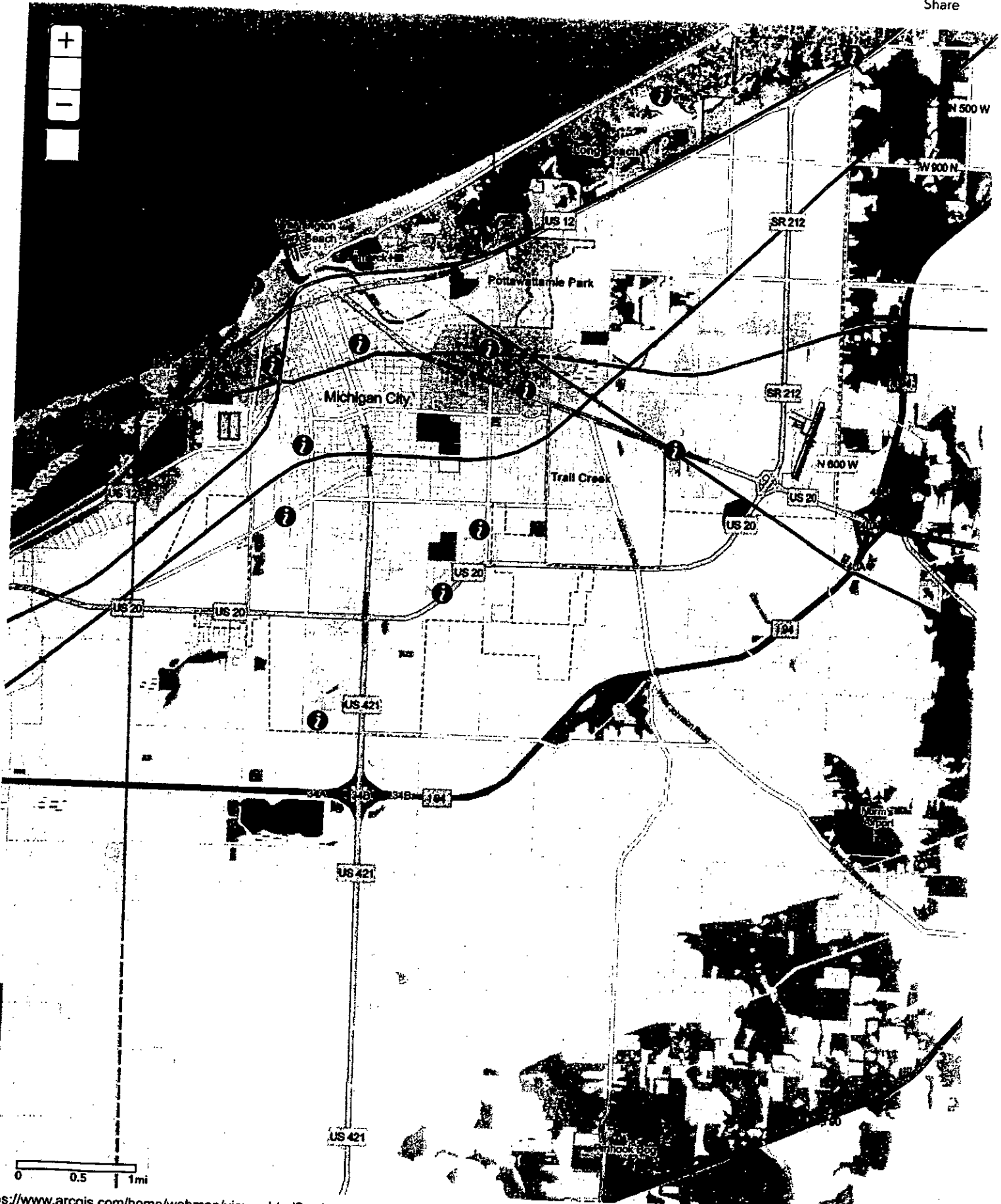
Share



ArcGIS ▾ LaPorte County Vote Centers (Proposed 2023)

Details | Basemap |

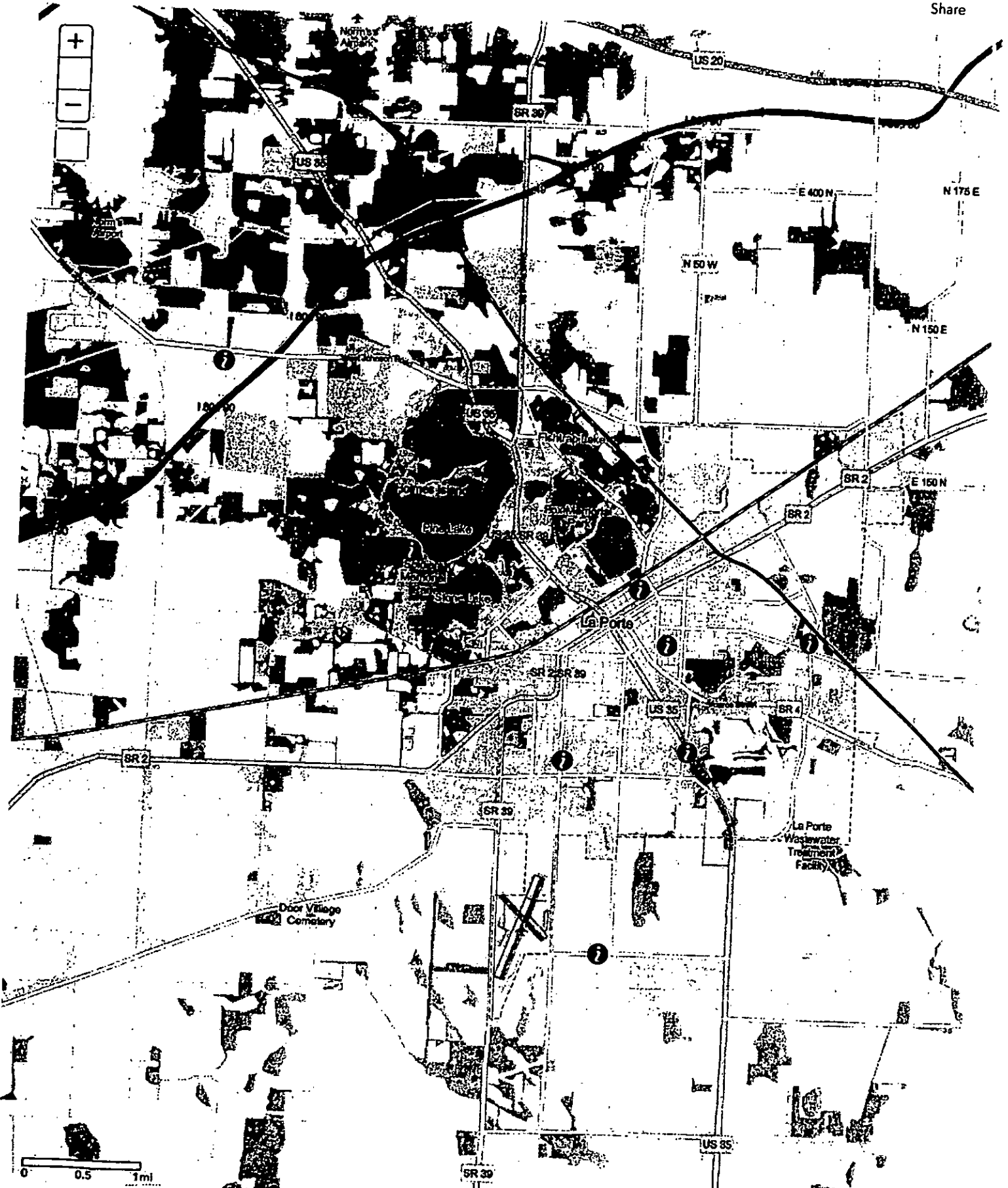
Share



ArcGIS ▾ LaPorte County Vote Centers (Proposed 2023)

Details | Basemap |

Share



COUNTY PRECINCT KEY

LaPorte County

Precinct Totals:93, Split Totals:57

Precinct	Split Name	Township	CON	SEN	HSE	County Comm.	County Council	Municipality	City Common Council	Town Council	School	School Board	Court of Appeals Judge
CASS	COUNTY	CASS	2	08	20	003	001				TRI TOWNSHIP CSC		
CENTER 01	COUNTY	CENTER	1	08	20	002	002				LAPORTE COMMUNITY SCHOOL CORPORATION		
CENTER 02	COUNTY	CENTER	1	08	20	002	002				LAPORTE COMMUNITY SCHOOL CORPORATION		
CENTER 03	COUNTY	CENTER	1	08	20	003	002				LAPORTE COMMUNITY SCHOOL CORPORATION		
CENTER 04	COUNTY	CENTER	1	08	20	003	002				LAPORTE COMMUNITY SCHOOL CORPORATION		
CENTER 05	COUNTY	CENTER	1	08	20	003	001				LAPORTE COMMUNITY SCHOOL CORPORATION		
CLINTON	COUNTY	CLINTON	2	08	20	003	001				LAPORTE COMMUNITY SCHOOL CORPORATION		
COOLSPRING 01	COUNTY	COOLSPRING	1	08	09	003	002				SOUTH CENTRAL COMMUNITY SCHOOL CORPORATION		
COOLSPRING 02	COUNTY	COOLSPRING	1	04	09	003	003				MICHIGAN CITY AREA SCHOOLS		
COOLSPRING 03	COUNTY	COOLSPRING	1	08	09	003	002				MICHIGAN CITY AREA SCHOOLS		
COOLSPRING 04	COUNTY	COOLSPRING	1	04	09	003	003				MICHIGAN CITY AREA SCHOOLS		
COOLSPRING 05	COUNTY	COOLSPRING	1	04	09	003	003				MICHIGAN CITY AREA SCHOOLS		
DEWEY	COUNTY	DEWEY	2	08	20	003	001				MICHIGAN CITY AREA SCHOOLS		
DUNELAND BEACH	DUNELAND BEACH	MICHIGAN	1	04	09	001	002	DUNELAND BEACH			TRI TOWNSHIP CSC		
GALENA 01	COUNTY	GALENA	2	08	09	001	004				MICHIGAN CITY AREA SCHOOLS		
GALENA 02	COUNTY	GALENA	2	08	09	001	004				NEW PRAIRIE UNITED SCHOOL CORPORATION		
HANNA	COUNTY	HANNA	2	08	20	003	001				NEW PRAIRIE UNITED SCHOOL CORPORATION		
HUDSON	COUNTY	HUDSON	2	08	07	001	004				SOUTH CENTRAL COMMUNITY SCHOOL CORPORATION		
JOHNSON	COUNTY	JOHNSON	2	08	20	002	004				NEW PRAIRIE UNITED SCHOOL CORPORATION		
KANKAKEE 01	COUNTY	KANKAKEE	2	08	20	002	004				JOHN GLENN SCH CORP		
KANKAKEE 02	COUNTY	KANKAKEE	2	08	20	002	004				NEW PRAIRIE UNITED SCHOOL CORPORATION		
KINGSBURY	KINGSBURY	WASHINGTON	2	08	20	002	004	KINGSBURY			NEW PRAIRIE UNITED SCHOOL CORPORATION		
KINGSFORD HEIGHTS	KINGSFORD HEIGHTS	UNION	2	08	20	002	004	KINGSFORD HEIGHTS			LAPORTE COMMUNITY SCHOOL CORPORATION		
La Crosse	La Crosse	DEWEY	2	08	20	003	001	LACROSSE			LAPORTE COMMUNITY SCHOOL CORPORATION		
											TRI TOWNSHIP CSC		

COUNTY PRECINCT KEY

Precinct	Split Name	Township	CON	SEN	HSE	County Comm.	County Council	Municipality	City Common Council	Town Council	School	School Board	Court of Appeals Judge
LAPORTE 2-4 NV	COUNTY	SCIPIO	2	08	20	002	001	LAPORTE	L2		LAPORTE COMMUNITY SCHOOL CORPORATION		
LINCOLN	COUNTY	LINCOLN	2	08	20	002	004				LAPORTE COMMUNITY SCHOOL CORPORATION		
LONG BEACH	LONG BEACH-LONG BEACH	MICHIGAN	1	04	09	001	002	LONG BEACH			MICHIGAN CITY AREA SCHOOLS		
LP 25	LAPORTE 1-2 L1	CENTER	1	08	20	002	001	LAPORTE	L1		LAPORTE COMMUNITY SCHOOL CORPORATION		
LP 26	LAPORTE 1-1 L1	CENTER	1	08	20	001	004	LAPORTE	L1		LAPORTE COMMUNITY SCHOOL CORPORATION		
LP 27	LAPORTE 1-3A L1	CENTER	2	08	20	002	004	LAPORTE	L1		LAPORTE COMMUNITY SCHOOL CORPORATION		
LP 28	LAPORTE 1-3B L1	KANKAKEE	2	08	20	002	004	LAPORTE	L1		NEW PRAIRIE UNITED SCHOOL CORPORATION		
LP 29	LAPORTE 2-1 L2	CENTER	1	08	20	002	001	LAPORTE	L2		LAPORTE COMMUNITY SCHOOL CORPORATION		
LP 30	LAPORTE 2-2 L2	CENTER	1	08	20	002	001	LAPORTE	L2		LAPORTE COMMUNITY SCHOOL CORPORATION		
LP 31	LAPORTE 2-3 L2	CENTER	1	08	20	002	001	LAPORTE	L2		LAPORTE COMMUNITY SCHOOL CORPORATION		
LP 32	LAPORTE 3-2 L3	CENTER	1	08	20	002	004	LAPORTE	L3		LAPORTE COMMUNITY SCHOOL CORPORATION		
LP 33	LAPORTE 3-1 L3	CENTER	1	08	20	002	004	LAPORTE	L3		LAPORTE COMMUNITY SCHOOL CORPORATION		
LP 34	LAPORTE 3-3A L3	CENTER	1	08	20	002	004	LAPORTE	L3		LAPORTE COMMUNITY SCHOOL CORPORATION		
LP 35	LAPORTE 3-3C L3	PLEASANT	2	08	20	002	004	LAPORTE	L3		LAPORTE COMMUNITY SCHOOL CORPORATION		
LP 36	LAPORTE 3-3B L3	SCIPIO	1	08	20	002	004	LAPORTE	L3		LAPORTE COMMUNITY SCHOOL CORPORATION		
LP 37	LAPORTE 4-1 L4	CENTER	2	08	20	002	004	LAPORTE	L4		LAPORTE COMMUNITY SCHOOL CORPORATION		
LP 38	LAPORTE 4-3 L4	CENTER	2	08	20	002	004	LAPORTE	L4		LAPORTE COMMUNITY SCHOOL CORPORATION		
LP 39	LAPORTE 4-2B L4 NPU	KANKAKEE	2	08	20	002	004	LAPORTE	L4		NEW PRAIRIE UNITED SCHOOL CORPORATION		
LP 40	LAPORTE 4-2 L4	PLEASANT	2	08	20	002	004	LAPORTE	L4		LAPORTE COMMUNITY SCHOOL CORPORATION		
LP 41	LAPORTE 5-1 L5	SCIPIO	1	08	20	002	001	LAPORTE	L5		LAPORTE COMMUNITY SCHOOL CORPORATION		
LP 42	LAPORTE 5-2 L5	CENTER	1	08	20	002	001	LAPORTE	L5		LAPORTE COMMUNITY SCHOOL CORPORATION		
LP 43	LAPORTE 5-4 L5	CENTER	1	08	20	002	001	LAPORTE	L5		LAPORTE COMMUNITY SCHOOL CORPORATION		
LP 44	LAPORTE 5-3 L5	CENTER	1	08	20	002	001	LAPORTE	L5		LAPORTE COMMUNITY SCHOOL CORPORATION		

COUNTY PRECINCT KEY

Precinct	Split Name	Township	CON	SEN	HSE	County Comm.	County Council	Municipality	City Common Council	Town Council	School	School Board	Court of Appeals Judge
MC 01	MICHIGAN CITY 1-1 W1	MICHIGAN	1	04	09	001	003	MICHIGAN CITY	W1		MICHIGAN CITY AREA SCHOOLS		
MC 02	MICHIGAN CITY 1-2 W1	MICHIGAN	1	04	09	001	003	MICHIGAN CITY	W1		MICHIGAN CITY AREA SCHOOLS		
MC 02	MICHIGAN CITY 1-2 W3	MICHIGAN	1	04	09	001	003	MICHIGAN CITY	W3		MICHIGAN CITY AREA SCHOOLS		
MC 03	MICHIGAN CITY 1-3 W1	MICHIGAN	1	04	09	001	003	MICHIGAN CITY	W1		MICHIGAN CITY AREA SCHOOLS		
MC 04	MICHIGAN CITY 5-1 W1	MICHIGAN	1	04	09	001	002	MICHIGAN CITY	W1		MICHIGAN CITY AREA SCHOOLS		
MC 05	MICHIGAN CITY 2-2 W2	MICHIGAN	1	04	09	001	003	MICHIGAN CITY	W2		MICHIGAN CITY AREA SCHOOLS		
MC 06	MICHIGAN CITY 2-3 W2	MICHIGAN	1	04	09	001	003	MICHIGAN CITY	W2		MICHIGAN CITY AREA SCHOOLS		
MC 07	MICHIGAN CITY 2-4 W2	MICHIGAN	1	04	09	001	003	MICHIGAN CITY	W2		MICHIGAN CITY AREA SCHOOLS		
MC 08	MICHIGAN CITY 2-1 W2	MICHIGAN	1	04	09	001	003	MICHIGAN CITY	W2		MICHIGAN CITY AREA SCHOOLS		
MC 09	MICHIGAN CITY 3-1 W3	MICHIGAN	1	04	09	001	003	MICHIGAN CITY	W3		MICHIGAN CITY AREA SCHOOLS		
MC 10	MICHIGAN CITY 3-2 W3	MICHIGAN	1	04	09	001	003	MICHIGAN CITY	W3		MICHIGAN CITY AREA SCHOOLS		
MC 11	MICHIGAN CITY 3-2 W3	COOLSPRING	1	04	09	003	003	MICHIGAN CITY	W3		MICHIGAN CITY AREA SCHOOLS		
MC 12	MICHIGAN CITY 4-4 W4	COOLSPRING	1	04	09	003	003	MICHIGAN CITY	W3		MICHIGAN CITY AREA SCHOOLS		
MC 13	MICHIGAN CITY 4-2 W4	COOLSPRING	1	04	09	003	003	MICHIGAN CITY	W4		MICHIGAN CITY AREA SCHOOLS		
MC 14	COOLSPRING 4-1 W4	COOLSPRING	1	04	09	003	003	MICHIGAN CITY	W4		MICHIGAN CITY AREA SCHOOLS		
MC 15	MICHIGAN CITY 4-3 W4	COOLSPRING	1	04	09	003	003	MICHIGAN CITY	W4		MICHIGAN CITY AREA SCHOOLS		
MC 16	MICHIGAN CITY 5-3 W5	MICHIGAN	1	04	09	001	002	MICHIGAN CITY	W5		MICHIGAN CITY AREA SCHOOLS		
MC 17	MC 4-3 W5	COOLSPRING	1	04	09	003	003	MICHIGAN CITY	W4		MICHIGAN CITY AREA SCHOOLS		

COUNTY PRECINCT KEY

Precinct	Split Name	Township	CON	SEN	HSE	County Comm.	County Council	Municipality	City Common Council	Town Council	School	School Board	Court of Appeals Judge
MC 18	MICHIGAN CITY 5-4 W5	MICHIGAN	1	04	09	001	002	MICHIGAN CITY	W5		MICHIGAN CITY AREA SCHOOLS		
MC 19	MICHIGAN CITY 5-2 W5	MICHIGAN	1	04	09	001	002	MICHIGAN CITY	W5		MICHIGAN CITY AREA SCHOOLS		
MC 20	MICHIGAN CITY 6-3 W6	MICHIGAN	1	04	09	001	002	MICHIGAN CITY	W6		MICHIGAN CITY AREA SCHOOLS		
MC 21	MICHIGAN CITY 6-3 W6	COOLSPRING	1	04	09	003	002	MICHIGAN CITY	W5		MICHIGAN CITY AREA SCHOOLS		
MC 22	MICHIGAN CITY 6-2 W6	MICHIGAN	1	04	09	001	002	MICHIGAN CITY	W6		MICHIGAN CITY AREA SCHOOLS		
MC 23	MICHIGAN CITY 6-1 W6	MICHIGAN	1	04	09	001	002	MICHIGAN CITY	W6		MICHIGAN CITY AREA SCHOOLS		
MC 24 NV	COUNTY	MICHIGAN	1	04	09	001	003				MICHIGAN CITY AREA SCHOOLS		
MC 45	MC 6-38 W5	COOLSPRING	1	04	09	003	002	MICHIGAN CITY	W5		MICHIGAN CITY AREA SCHOOLS		
MICHIANA SHORES 01	MICHIANA	MICHIGAN	1	04	09	001	002	MICHIANA SHORES			MICHIGAN CITY AREA SCHOOLS		
MICHIANA SHORES 02	MICHIANA SHORES 02	SPRINGFIELD	1	08	09	001	002	MICHIANA SHORES			MICHIGAN CITY AREA SCHOOLS		
NEW DURHAM 01	COUNTY	NEW DURHAM	1	04	20	003	003				MSD OF NEW DURHAM TOWNSHIP		
NEW DURHAM 02	COUNTY	NEW DURHAM	1	04	20	003	003				MSD OF NEW DURHAM TOWNSHIP		
NOBLE	COUNTY	NOBLE	2	08	20	003	001				SOUTH CENTRAL COMMUNITY SCHOOL CORPORATION		
PLEASANT	COUNTY	PLEASANT	2	08	20	002	004				LAPORTE COMMUNITY SCHOOL CORPORATION		
POTTAWATTAMIE PARK	POTTAWATTOMIE PARK	MICHIGAN	1	04	09	001	002	POTTAWATOMI PARK			MICHIGAN CITY AREA SCHOOLS		
PRAIRIE	COUNTY	PRAIRIE	2	08	20	003	001				TRI TOWNSHIP CSC		
SCIPIO 01	COUNTY	SCIPIO	1	08	20	003	001				LAPORTE COMMUNITY SCHOOL CORPORATION		
SCIPIO 02	COUNTY	SCIPIO	1	08	20	003	001				LAPORTE COMMUNITY SCHOOL CORPORATION		
SPRINGFIELD 01	COUNTY	SPRINGFIELD	1	08	09	001	002				MICHIGAN CITY AREA SCHOOLS		
SPRINGFIELD 02	COUNTY	SPRINGFIELD	1	08	09	001	002				MICHIGAN CITY AREA SCHOOLS		
SPRINGFIELD 03	COUNTY	SPRINGFIELD	1	08	09	001	002				MICHIGAN CITY AREA SCHOOLS		

COUNTY PRECINCT KEY

Precinct	Split Name	Township	CON	SEN	HSE	County Comm.	County Council	Municipality	City Common Council	Town Council	School	School Board	Court of Appeals Judge
TRAIL CREEK 01	TRAIL CREEK 01	MICHIGAN	1	04	09	001	002	TRAIL CREEK			MICHIGAN CITY AREA SCHOOLS		
TRAIL CREEK 02	TRAIL CREEK 02	COOLSPRING	1	04	09	003	002	TRAIL CREEK			MICHIGAN CITY AREA SCHOOLS		
UNION	COUNTY	UNION	2	08	20	002	004				LAPORTE COMMUNITY SCHOOL CORPORATION		
WANATAH 01	WANATAH 01	CASS	2	08	20	003	001	WANATAH			TRI TOWNSHIP CSC		
WANATAH 02	WANATAH 02	CLINTON	2	08	20	003	001	WANATAH			SOUTH CENTRAL COMMUNITY SCHOOL CORPORATION		
WASHINGTON	COUNTY	WASHINGTON	2	08	20	002	004				LAPORTE COMMUNITY SCHOOL CORPORATION		
WESTVILLE	WESTVILLE	NEW DURHAM	1	04	20	003	001	WESTVILLE			MSD OF NEW DURHAM TOWNSHIP		
WILLS	COUNTY	WILLS	2	08	20	002	004				NEW PRAIRIE UNITED SCHOOL CORPORATION		