

Broadband Task Force Workshop

October 7th 2022

The La Porte County Rural Broadband Task Force



**LaPorte County
Rural Broadband
Task Force**

Who we are



- Co-Chair: Sheila Matias LPC Commission, President
- Co-Chair: Tony Rodriguez LPC OCED, Director
- Michael Bohacek – *Indiana, State Senator, District 8*
- Jim Pressell – *Indiana State Representative, District 20*
- Pat Boy – *Indiana State Representative, District 9*
- Randy Novak – *President, La Porte County Council*
- Al Walus – *Senior Project Manager, Christopher B. Burke Engineering, LLC*
- Scott Sears – *President & CEO, KVREMC*
- Justin Kiel – *CEO & Owner Westville Indicator*
- Tom Fath – *Entrepreneur, Westville Resident*
- Mary Jane Thomas – *Founder, Thomas & Associates*
- Richard Pate – *CEO, Pate & Associates*
- Mary Foell – *Purdue Extension*
- Mitch Bishop – *Planner, La Porte County*
- Mike Ordziejewski – *GIS Director, La Porte County*
- Fonda Owens – *Director, La Porte County Public Library*
- Kevin McGuire – *Director of I.T., Michigan City Area Schools*
- Bailey McGrath – *Community Development Specialist, La Porte County OCED*
- Don Parker – *Director, Wanatah Public Library*
- Darlene Hale – *Director of Information Technology, La Porte County*
- Mark Scarborough – *Member, La Porte County Farm Bureau*
- Roscoe Hoffman – *Network Administrator, La Porte County*
- Mike Schultz – *Assessor, La Porte County*
- Nelson Pichardo – *Attorney, Friedman & Associates*

Who we are

BURKE



Defining the Task



Founded in 2019, the La Porte County Broadband Task Force is a hand selected, Blue Ribbon Panel of executives, representing key stakeholder groups from all of La Porte County's primary anchor institutions, healthcare, education, government, and private industry.

Vision

Equitable deployment and utilization of adequate broadband infrastructure to improve the quality of life and competitiveness of every resident, business, and organization in LaPorte County.

Mission

Ensure LaPorte County plans for, transitions to, and prospers in the digital age through a transformation into a human-centered digitally-inclusive technology-ready ecosystem.



STRATEGIC PLAN FOR LAPORTE COUNTY BROADBAND DEPLOYMENT & UTILIZATION

MISSION: Ensure La Porte County plans for, transitions to, and prospers in the digital age through a transformation into a human-centered, digitally-inclusive, technology-ready ecosystem.

VISION: Equitable deployment and utilization of adequate broadband infrastructure to improve the quality of life and competitiveness of every resident, business, and organization in La Porte County.

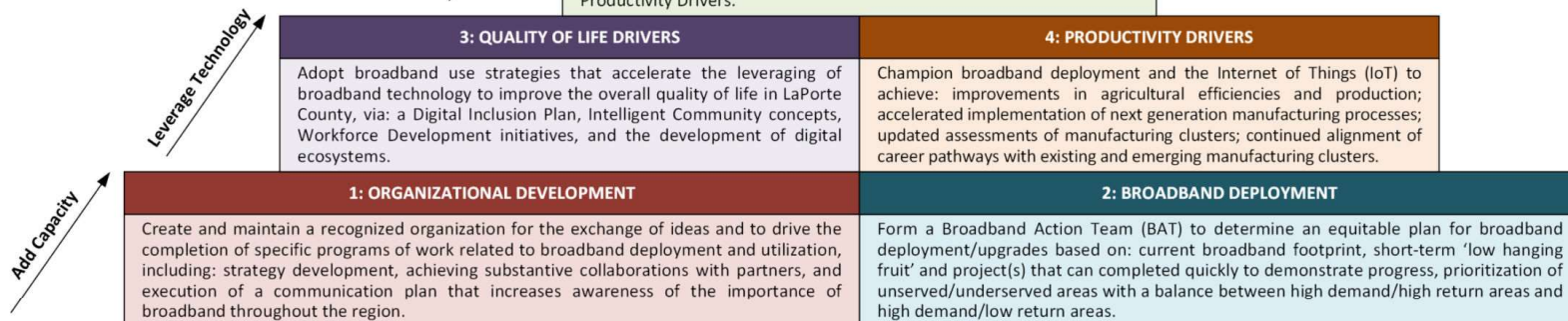
Five 'Cornerstones' of Digital Inclusion Strategic Plan:

5: LAPORTE COUNTY NEXT GENERATION INNOVATION FUND

Develop Public-Private partnerships to secure investment funding and local/regional loans and grants to create an Innovation Fund in support of locally-driven visionary ideas that support the priorities identified in the Strategic Plan 'Cornerstones' of Quality of Life Drivers and Productivity Drivers.

FIVE 'CORNERSTONES': The 'Cornerstones' provide a structure to:

- Organize Strategic Plan elements
- Identify priorities over a three year period to optimize the contributions of Task Force members
- Provide a means to quantify, measure and track achievements



1: ORGANIZATIONAL DEVELOPMENT	GOAL 1.1			1.2			1.3			1.4			1.5			1.6			1.7		
	Establish Work Groups to Optimize Contributions of Task Force Volunteers			Identify LaPorte County staff to support the RBTF			Identify a Partner & Responsibility Matrix that supports RBTF goals			Execute a Communication Plan to constantly communicate expectations to public			Establish Advisory Councils that support RBTF goals			Establish Key Performance Indicators (KPIs) to measure progress			Establish Document Management and Archival System		
	2019			2019			2019			2019			2019			2019			2019		
	2020			2020			2020			2020			2020			2020			2020		
OBJECTIVES	2021			2021			2021			2021			2021			2021			2021		
	<ul style="list-style-type: none"> • Communication • Mapping/Data • Influencers • Digital Inclusion 			Office of Community & Econ. Dev., GIS, E-911, County Library			Engage constituencies who rely on internet connectivity to be competitive			Issue communications across multiple platforms on a defined/regular basis			Form Councils: Agriculture, Manufacturing, E-Learning, Health Care			Research leading edge public/private digital inclusion entities			Repository for all RBTF documents and work product with access protocols		
	Add additional Task Force members based on emerging trends			Assign additional support staff based on emerging trends			Formalize partner responsibility expectations and contributions			Website, blog, Storytelling feature to enhance interest and community engagement			Add additional Advisory Councils based on emerging trends			Define KPIs aligned to Mission/Vision			Reconfirm repository access protocols based on emerging trends		
	Reconfirm makeup of Task Force based on defined next steps			Reconfirm makeup of support staff based on defined next steps			Reconfirm Constituency Matrix and partnership objectives based on defined next steps			Issue first comprehensive Outcomes Report to County residents			Reconfirm makeup of Advisory Councils based on defined next steps			Self-Audit of KPIs for inclusion into Outcomes Report			Reconfirm repository access protocols based on defined next steps		

Each individual member/collaborator will bring their expertise to the table, serving a vital role in guiding LaPorte County on a pathway which will allow us to analyze this important issue, assess options and technology, and then work with an expanding group of partners to fund and build out projects. By bringing a range of skills and experience to the table for this critical undertaking: we aim to develop a plan based on facts, best practices and availability of this critically important infrastructure; and we aim to propose an economically viable, common sense solution that will serve LaPorte County well into the future.

2: BROADBAND DEPLOYMENT

OBJECTIVES			GOAL 2.1	2.2	2.3	2.4	2.5	2.6	2.7
			Form a diverse Broadband Action Team (BAT)	Identify current footprint of broadband infrastructure and services	Identify current map of local physical assets and educational resources	Establish broadband connectivity service level protocols	Establish guidelines for various broadband deployment models	Identify short-term project schedule and 'low-hanging fruit'	Equity-Based Deployment Prioritization Plan
2019	2019	2019	Schools, Local Officials, Neighborhood Assoc., ISPs, Bankers, Telco & Elec. Co-Ops, Faith Org.	Data validation with: survey; speed tests; public input; other data from apps	Map: water towers, antennas, grain silos, schools, libraries and health care services	Issue minimum service requirements for broadband deployment projects	Assess: private led; public-private (w/co-ops); co-ops; County/Mini.; open access	Follow-up on NxLevel Connections Phase 1 grant applications & prepare project list	Define prioritization framework
2020	2020	2020	Add additional BAT members based on emerging trends	Topology and density analysis to rate deployment option challenges	GIS mapping of manufacturing companies in LaPorte County	Supplement minimum requirements based on emerging technologies	Issue Deployment Model Protocols	Complete 'low-hanging fruit' objectives	Use results of 2.2 and 2.3 to finalize Equity-Based Deployment Prioritization Plan
2021	2021	2021	Reconfirm makeup of BAT based on defined next steps	Reconfirm footprint of broadband infrastructure and services	Map: CTE high school student clusters; STEM programs and Robotics Team clusters	Reconfirm service protocols based on defined next steps	Reconfirm Deployment Model Protocols based on defined next steps	Develop 2 nd round of 'low-hanging fruit' objectives and begin implementation	Reconfirm deployment plan based on emerging trends

Access to high speed internet is no longer a luxury but a necessity. Just like electricity and water are essential utilities, internet access is now an integral part of our life as a utility. Our goal is to even the playing field so that children in rural communities have the same access to the internet to do their homework as the kids in our cities do. Broadband is essential to our businesses, farms, and health care facilities who rely on internet to stay competitive and to do their daily work.

3: QUALITY OF LIFE DRIVERS

OBJECTIVES			GOAL 3.1	3.2
			Digital Inclusion Plan	Communication of Quality of Life Drivers
2019	2019	2019	Subscribership, digital literacy/use; Intelligent Community; Workforce Dev.	Compile 'Stories' of broadband impacts to promote RBTF Mission and Vision
2020	2020	2020	Development of Equity-based Digital Ecosystems	Prepare blogs, Fact Sheets, graphics of Quality of Life impacts
2021	2021	2021	Issue Digital Inclusion Plan	Reassess Quality of Life communication strategy based on defined next steps

The general public must understand that broadband access has become an essential utility to maintain and then improve current levels of Quality of Life in LaPorte County.

4: PRODUCTIVITY DRIVERS

OBJECTIVES			GOAL 4.1	4.2
			Promote Manufacturing Cluster Efficiencies	Promote Next Generation Agricultural and Manufacturing Practices
2019	2019	2019	Document and map current assessments of manufacturing clusters	Connect Ag producers and manufacturers to technical resource providers
2020	2020	2020	Identify emerging clusters and promote a LaPorte County digital supply chain	Conduct a LaPorte County Entrepreneurial Ecosystem Symposium
2021	2021	2021	Support alignment of high school career pathways with cur-rent and emerging clusters	Identify emerging issues in next generation Ag/Man. practices

As the LaPorte County digital ecosystem is deployed, substantive engagement with end-user constituencies will accelerate a faster return on the broadband deployment investment.

5: LAPORTE COUNTY NEXT GENERATION INNOVATION FUND

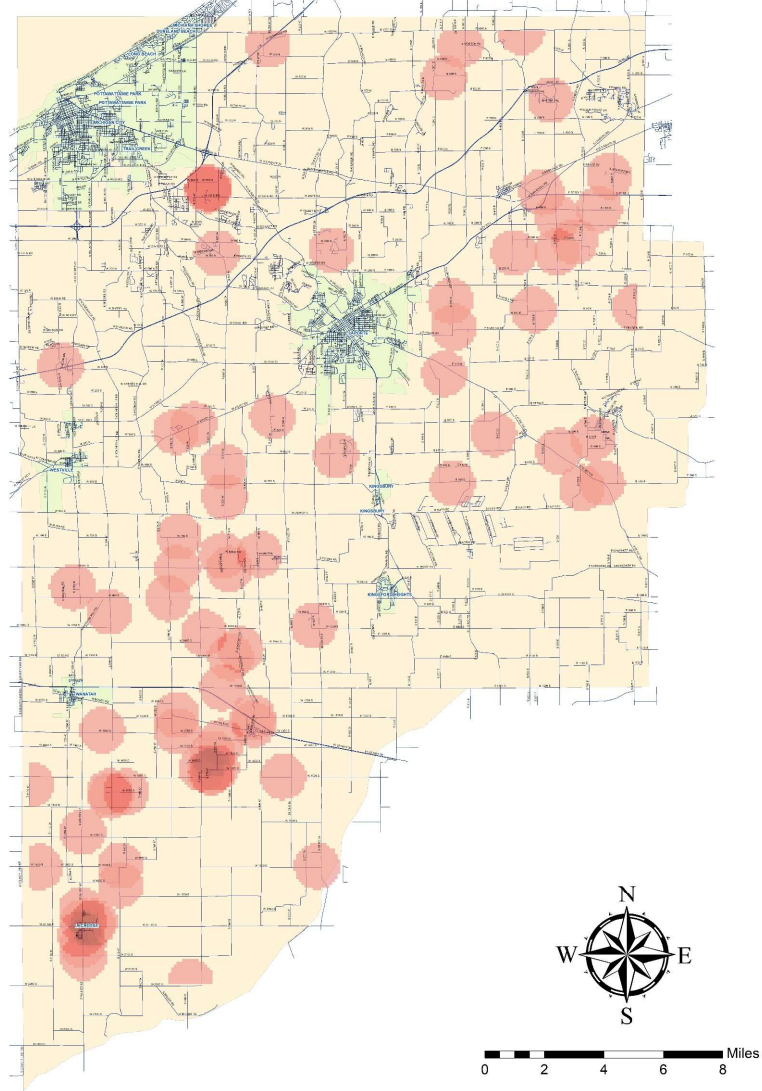
OBJECTIVES			GOAL 5.1	5.2
			Form a Broadband Innovation Fund Team	Create Endowment for Next Generation Innovation Fund
2019	2019	2019	{No scheduled activities for this item in 2019.}	{No scheduled activities for this item in 2019.}
2020	2020	2020	Research funding opportunity Best Practices; loan and grant programs	{No scheduled activities for this item in 2020.}
2021	2021	2021	Engage banks, Economic Development officials & Community Foundations	Create fund and work on building reserves

Along with planning and support functions, funding will be required to achieve the goals of broadband deployment and utilization.

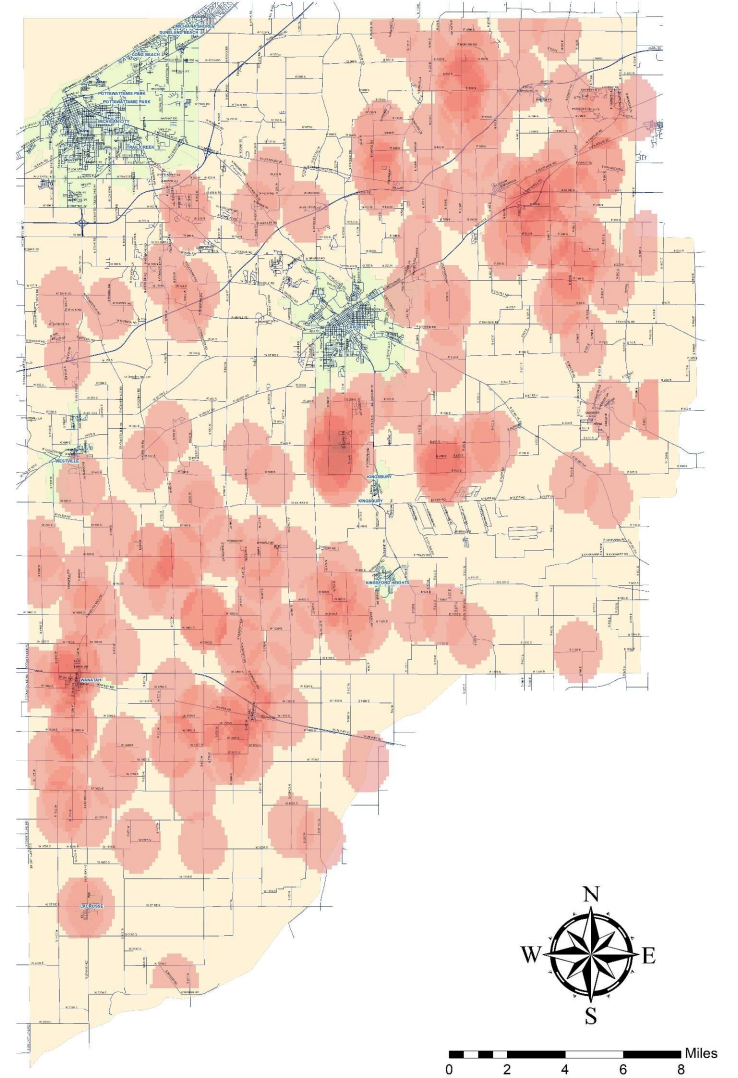
Planning during COVID



LaPorte County Internet Speed Results (2019 Results)



LaPorte County Internet Speed Results (2021 Results)







Grant from HFL Makes FTTH Study Possible

Introduction: Though LaPorte County contains two significant metropolitan areas in LaPorte and Michigan City, that have adequate broadband service, much of the county is rural and likely un- or underserved. As the events of 2020 have shown, high-speed, reliable, symmetrical Internet service can and should be considered a crucial aspect of public infrastructure. Remote learning, remote working, and telehealth service have become commonplace, and without sufficient Internet speeds, rural residents of the county are locked out of many opportunities. For this reason, LaPorte County has commissioned Yates Engineering Services (YES) to prepare GIS layouts for fiber-to-the-premise deployment in 20 townships, as well as town of Wanatah, for a total of 21 different designs.

Mission: This report will help the County set expectations when it comes to the financial burden of deploying fiber and that it will be useful in determining which townships should be prioritized in the initial stages of a fiber-to-the premises project.

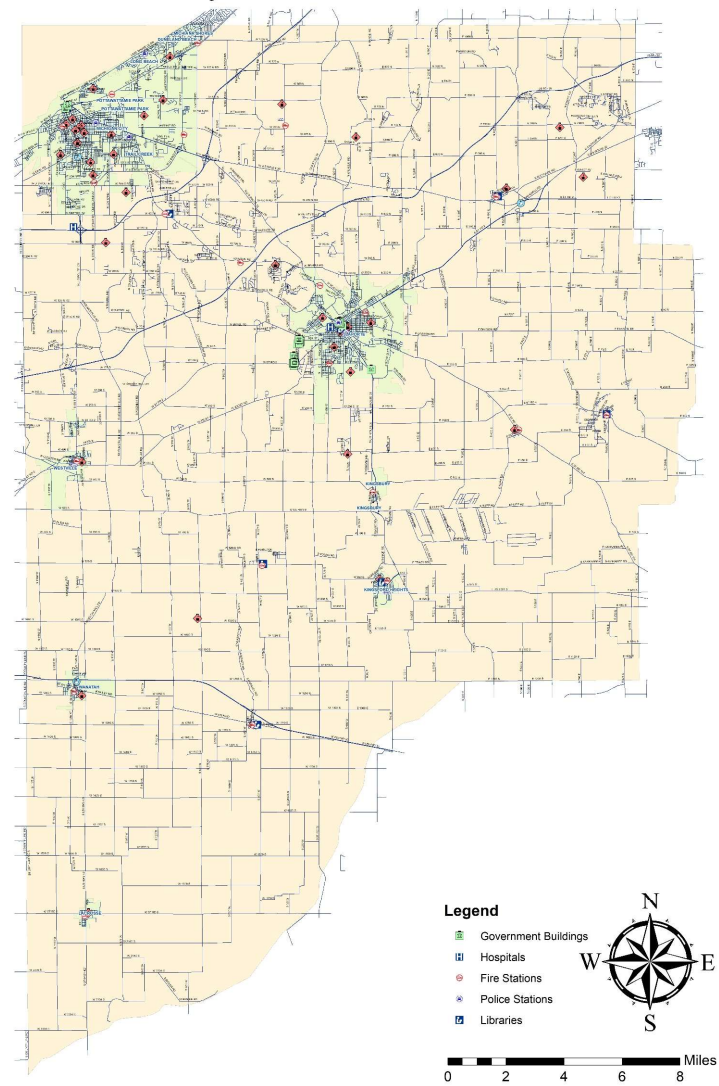




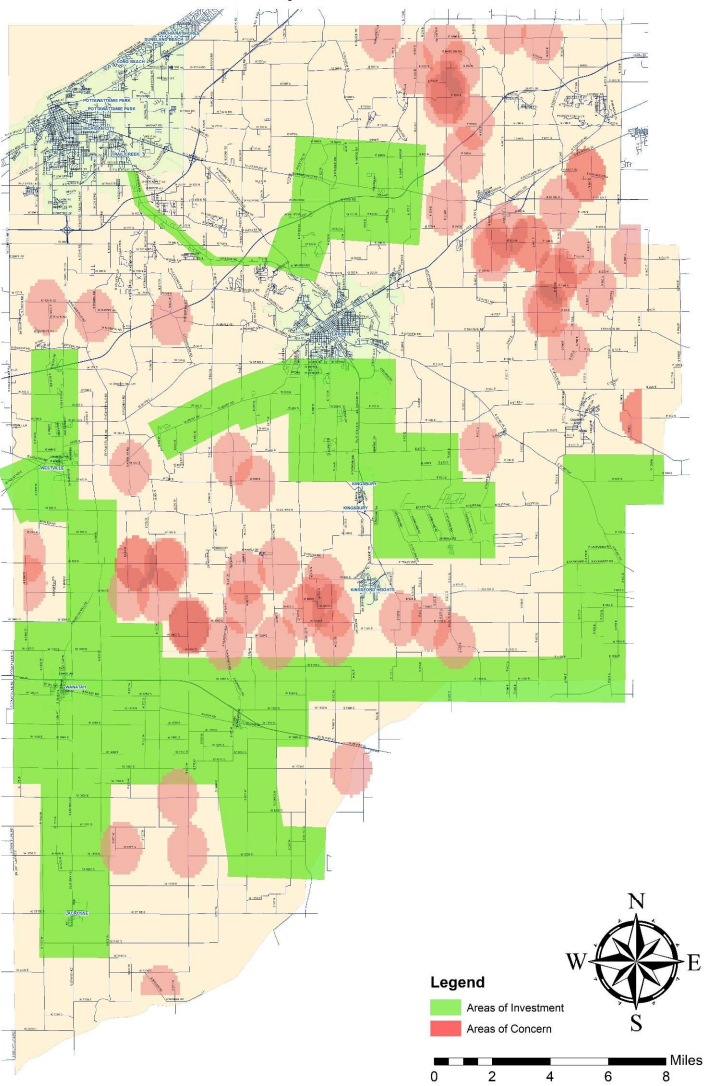
Successes over the past 3 years

- GEER award for Michigan City
- KVREMC expansion
- OCED writes successful HLF Grant to fund the Yates FTTH Study
- Certified Broadband Ready Community – January 2022
- NLC Round 3
- Sharing Meadows Expansion

LaPorte County - Governmental Infrastructure



LaPorte County - Areas of Focus





Jill Richey,
Regional Manager,
Public Affairs



Michael O'Keefe
VP External Affairs: IN, MI, OH



Bill Richey
President & CEO



Debra Piscola
Sr. Director, Governmental Affairs



Gene Crusie
Chief Executive Officer



Panel Discussion

Continued Progress



For more information on what the Task Force is working on, please visit
laporteco.in.gov/residents/broadband-task-force

