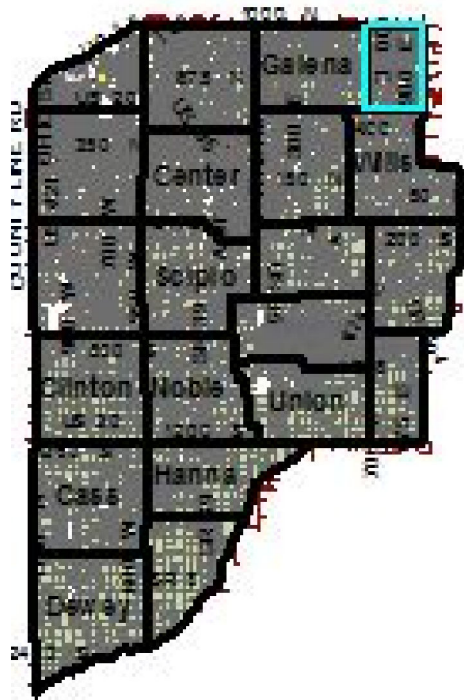
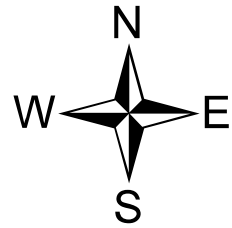


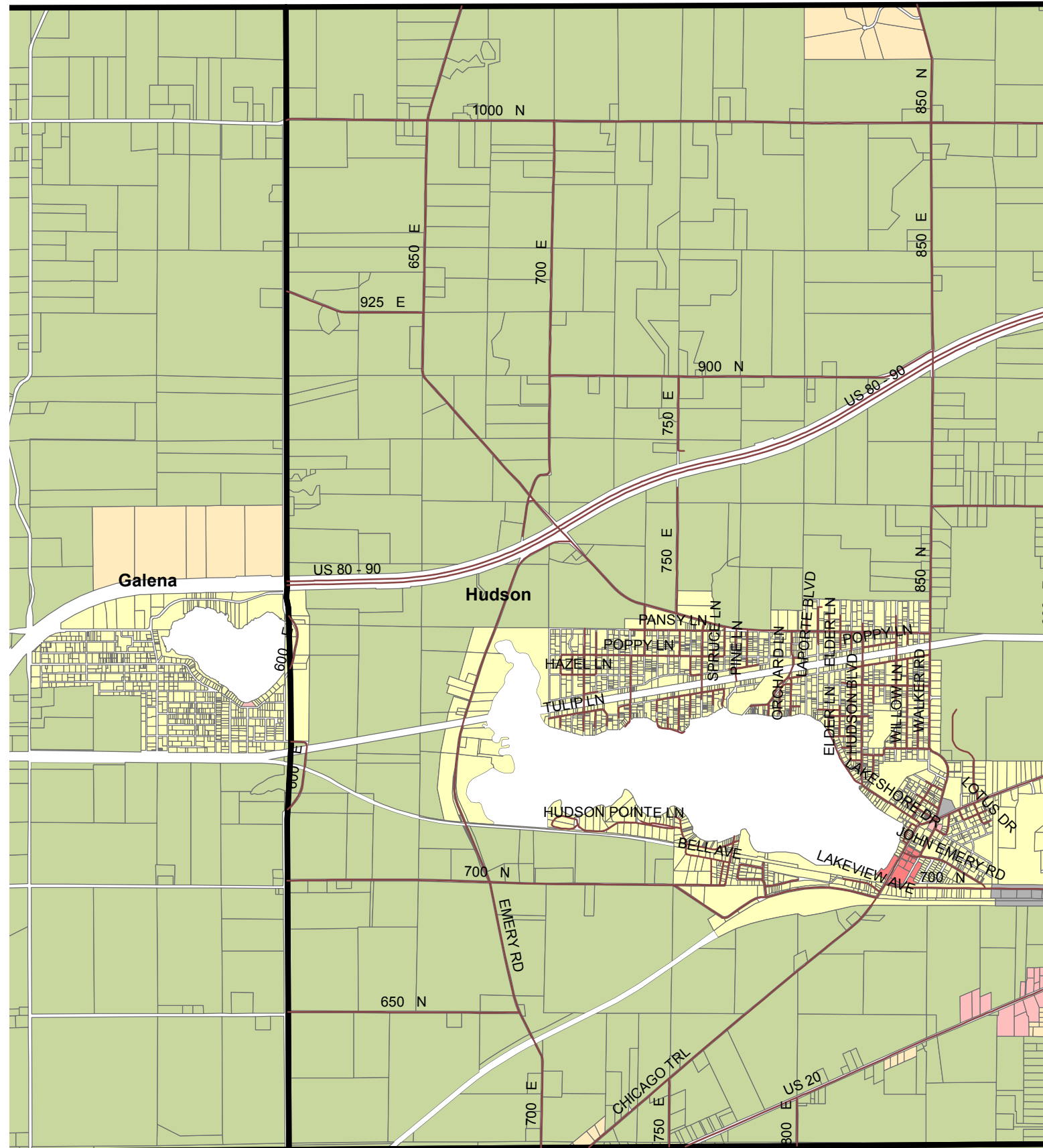
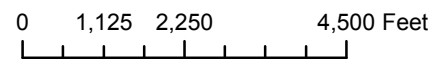
# MAP #8 Hudson Township Zoning Map



## Township Snapshot

Land area: 12.7 sq. mi.  
 Water area: 0.9 sq. mi.  
 Population: 1,909  
 Males: 974  
 Females: 935

Occupied houses/apartments: 1,909  
 (1,671 owner occupied, 238 renter occupied)  
 % of renters here: 12%  
 State: 29%



## Legend

- LP\_Townships
- Zoning Districts
- Incorporated Towns/ROW/Water Features
- NEW\_ZONE
- A-Agriculture
- AP-Airport
- B1-Neighborhood Commercial
- B2-General Commercial
- B3-Highway Commercial
- CBD1-Downtown Core
- CBD2-Transition/Hamlet Area
- M1-Light Industrial
- M2-Heavy Industrial
- MD-Marina District
- OS-Office Service
- R1A-Single Family
- R1B-Single Family
- R1C-Single Family
- R1D-Single Family
- R1E-Waterfront Residential
- R2A-Townhouse
- R2B-Townhouse
- R3A-Low-Rise Multiple Family
- R3B-Mid-Rise Multiple Family
- R4-Manufactured Home Park

Created By: Mitchell Bishop  
 La Porte County Planning Director  
 4/1/2014