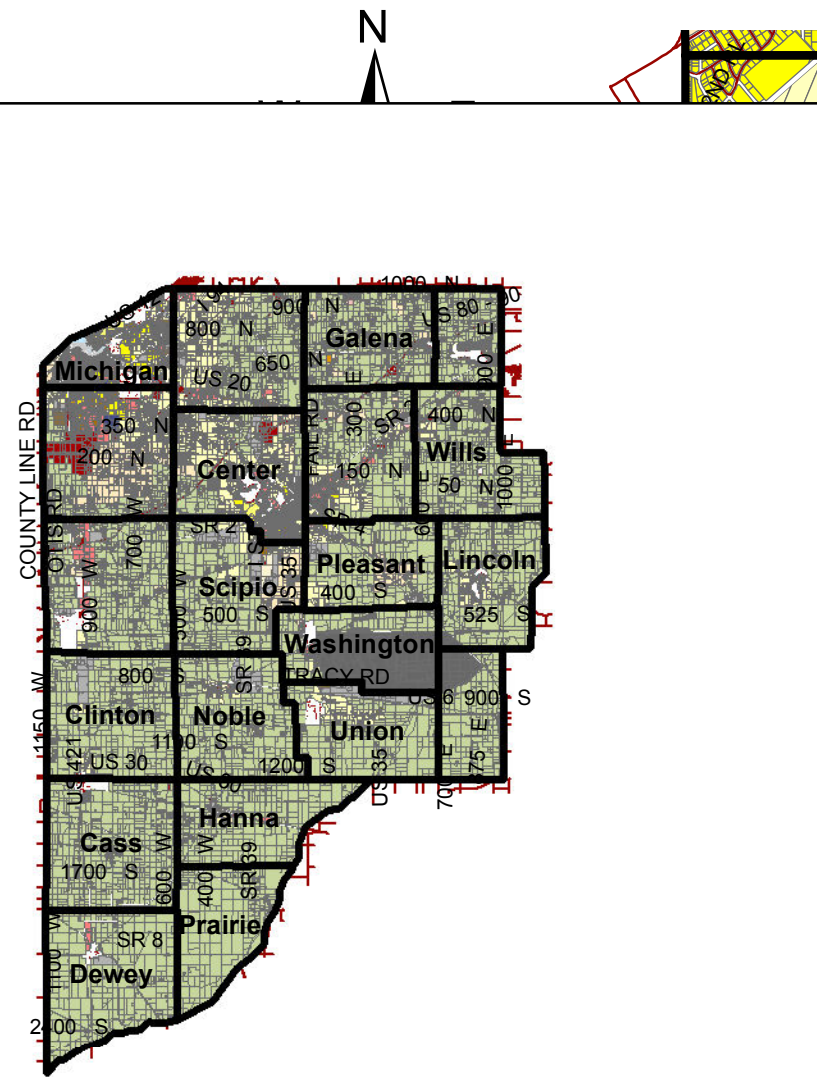


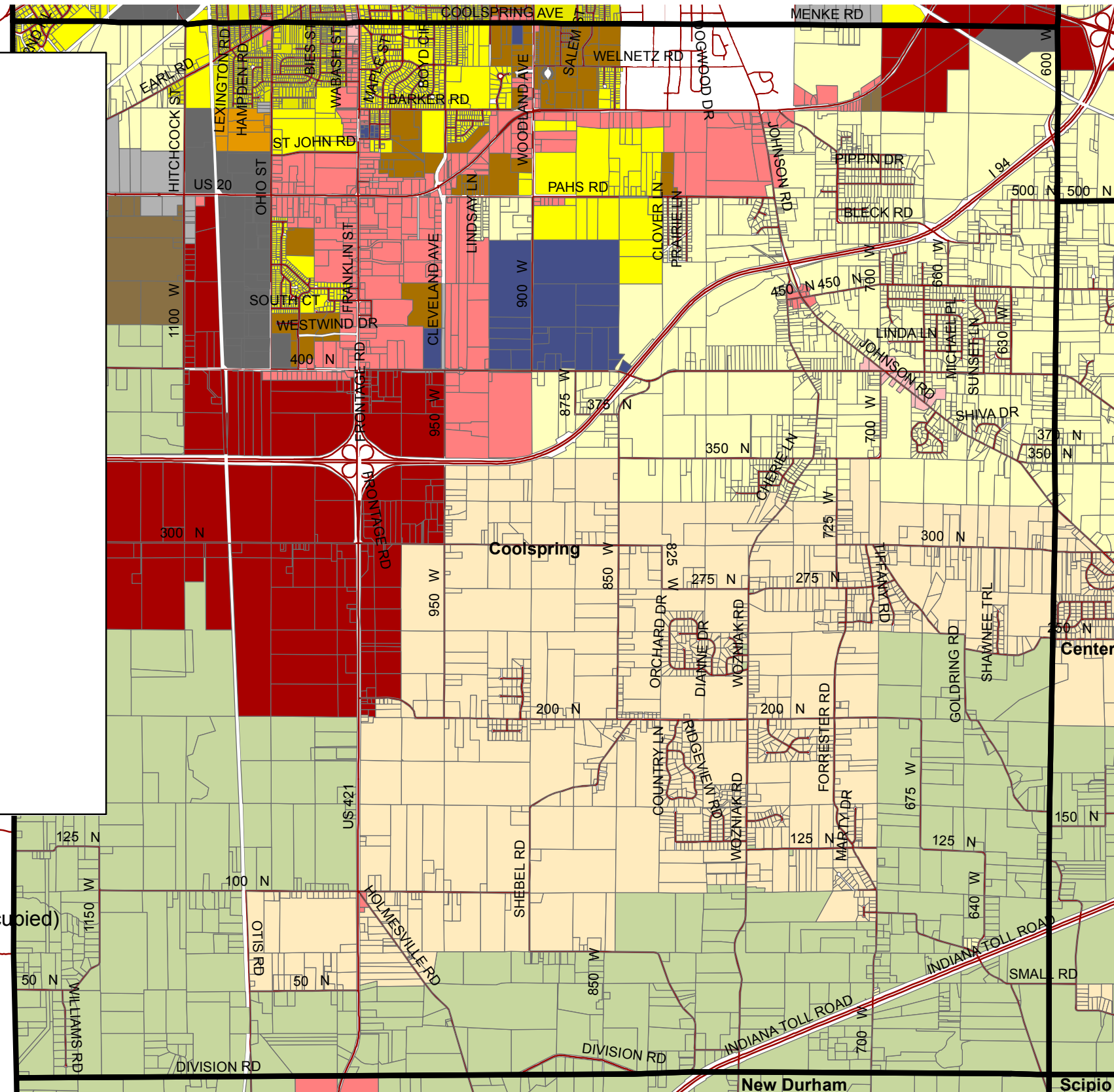
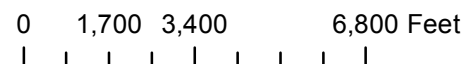
MAP #4 Coolspring Township Zoning Map



Township Snapshot

Land area: 36.0 sq. mi.
 Water area: 0.1 sq. mi.
 Population: 14,910
 Males: 7,115
 Females: 7,795

Occupied houses/apartments:
 14,667 (10,842 owner occupied, 3,825 renter occupied)
 % of renters here: 26%
 State: 29%



Legend

- LP_Townships
- Zoning Districts
- Incorporated Towns/ROW/Water Features
- NEW_ZONE

- A-Agriculture
- AP-Airport
- B1-Neighborhood Commercial
- B2-General Commercial
- B3-Highway Commercial
- CBD1-Downtown Core
- CBD2-Transition/Hamlet Area
- M1-Light Industrial
- M2-Heavy Industrial
- MD-Marina District
- OS-Office Service
- R1A-Single Family
- R1B-Single Family
- R1C-Single Family
- R1D-Single Family
- R1E-Waterfront Residential
- R2A-Townhouse
- R2B-Townhouse
- R3A-Low-Rise Multiple Family
- R3B-Mid-Rise Multiple Family
- R4-Manufactured Home Park

Created By: Mitchell Bishop
 La Porte County Planning Director
 4/1/2014